

Floodplain Analysis, Channel Design & CLOMR

Tract Map No. 31689, City of Indio, CA

Client

Regency Homes
2 Chateau Court
Rancho Mirage, CA
92270

Project Location

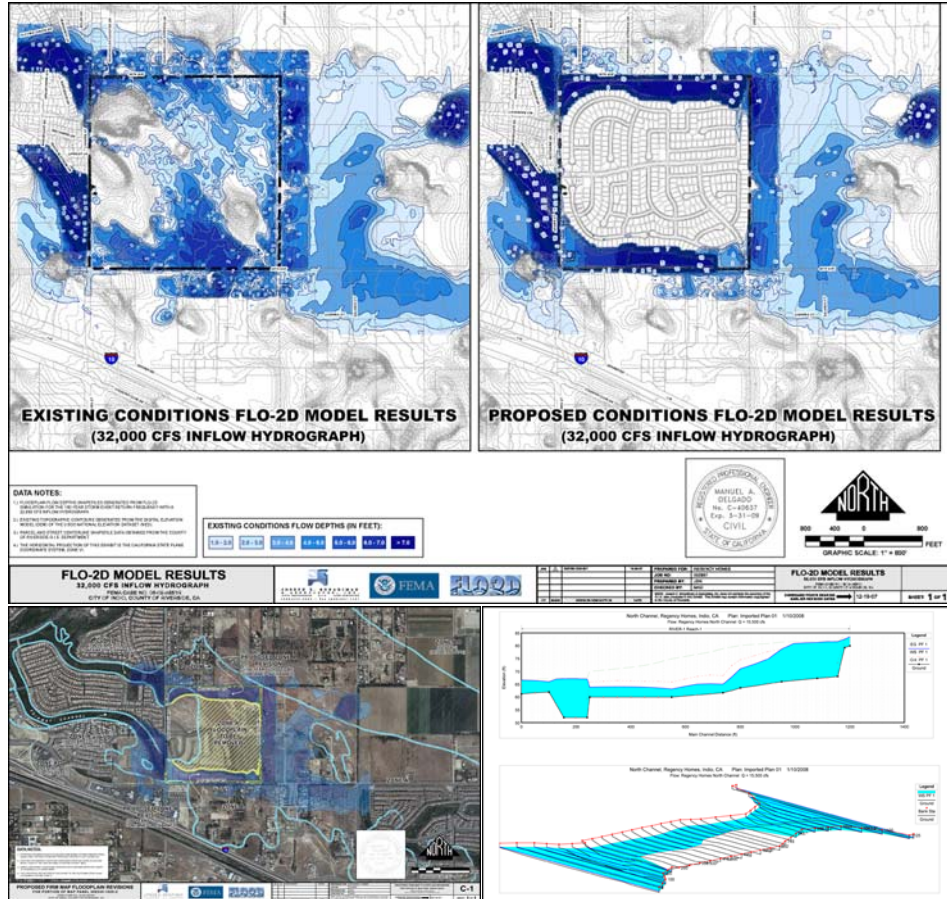
Indio, CA

Contact

Peter Solomon
President
760 / 770-7373

Project Date

2006-2007



JBA utilized the FLO-2D floodplain analysis software application to prepare the FEMA Conditional Letter of Map Revision (CLOMR) for the Tract 31689 residential subdivision in the City of Indio, CA. The floodplain analysis was performed for both existing and proposed conditions, and was used to aid in the

design of two flood control channels to the north and south of the proposed development. The U.S. Army Corps of Engineers HEC-6 and HEC-RAS software and JBA's in-house hydraulics software were also used in the channel design. The CLOMR was approved in November 2007.

Key Project Staff

Manuel A. Delgado, P.E. – *Project Manager*
Joseph S.C. Bonadiman, P.E. – *Quality Control/Project Oversight*
Jesse D. Nash – *FLO-2D/G.I.S. Analyst*

