

Master District GIS

Lake Arrowhead Community Services District (LACSD), Lake Arrowhead, CA

Client

Lake Arrowhead
Community Services
District (LACSD)
28200 State Highway
189, Bldg. 3, Ste. 150
Lake Arrowhead, CA
92352

Project Location

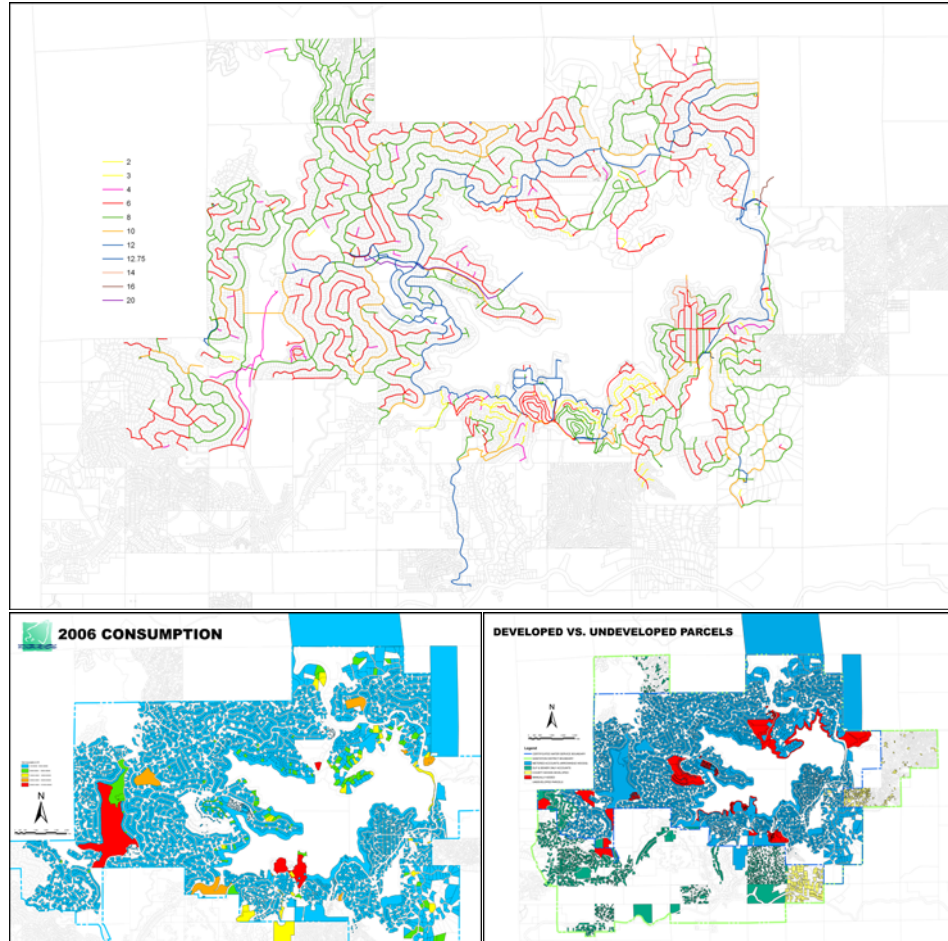
Lake Arrowhead, CA

Contact

Ryan Gross, P.E.
District Engineer
909/336-7137

Project Date

2005-Present



JBA prepared the Master GIS for the Lake Arrowhead Community Services District (LACSD) in Lake Arrowhead, CA. This effort included coordinating between LACSD's Engineering, Finance, Operations, and Maintenance departments to gather existing customer, billing, maintenance/repair, survey, water

consumption, and water/wastewater infrastructure asset data for assembly into multiple geodatabases to produce presentation materials to the LACSD Board of Directors, aid in Capital Improvement Program decision making, and construct a Water/Wastewater Demand Model (prepared by CH2M-Hill) to prepare for future population growth.

Key Project Staff

Edward J. Bonadiman – *Project Manager*
Joseph S.C. Bonadiman, P.E. – *Quality Control/Project Oversight*
Jesse D. Nash – *G.I.S. Analyst*



Master District GIS

Lake Arrowhead Community Services District (LACSD), Lake Arrowhead, CA

