

109-Lot Residential Subdivision

Tract Map No. 10608, Lake Arrowhead, CA

Client

Concordia Homes
13655 Nobel Drive,
Suite 330
San Diego, CA 92122

Project Location

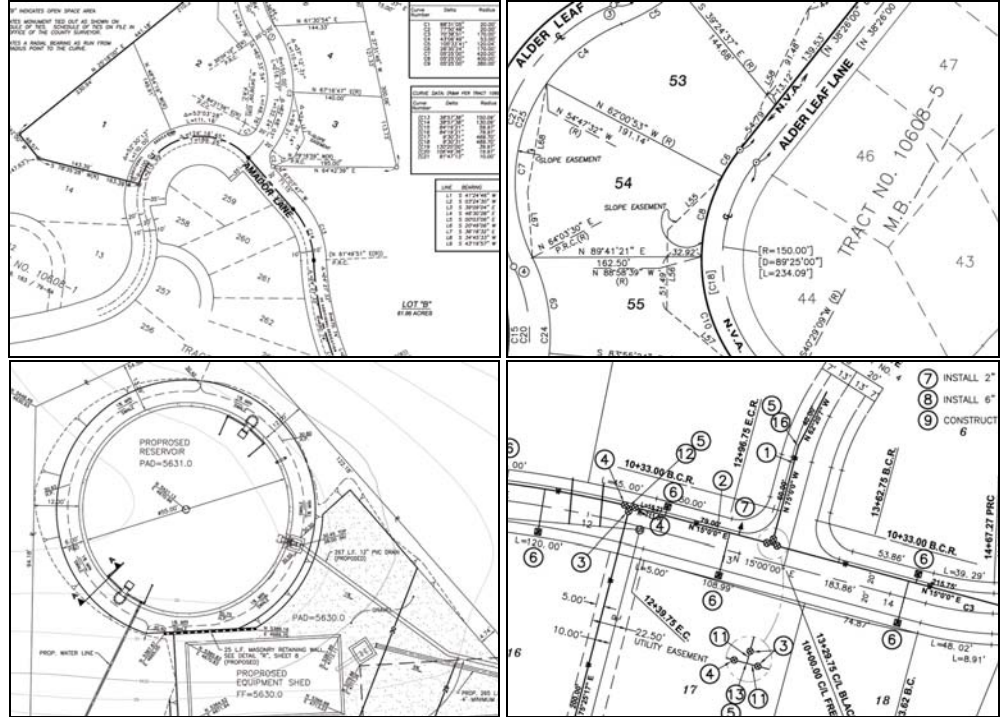
Lake Arrowhead, CA

Contact

Jeb Hall
Vice President
909 / 875-7373

Project Date

2007



JBA provided all on-site and applicable off-site improvements plans for the development of a 109-lot residential subdivision situated in the San Bernardino Mountains in Lake Arrowhead, CA. These plans included grading, street, water, sewer, and storm drain improvements.

In addition, JBA provided topographic and boundary surveying services, as well as construction staking for all improvements throughout the construction phase of the project. JBA also designed the construction of a 400,000-gallon water reservoir to serve the subdivision.

Key Project Staff

Joseph S.C. Bonadiman, P.E. – *Project Engineer*
Edward J. Bonadiman, P.L.S. – *Survey Manager*
Dennis W. Jackson, P.E. – *Senior Water Resources Engineer*

