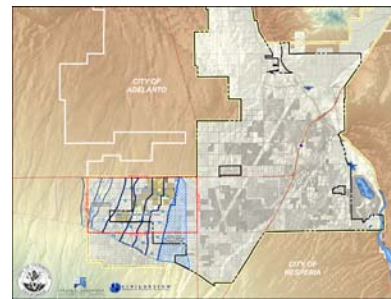


Large-scale projects and studies, including General Plans, Specific Plans, Area Plans, Drainage Master Plans, Water Quality Management Master Plans (WQMMPs), Event Plans, Strategic Plans, and Initial Studies and Environmental Impact Reports (EIRs) prepared for large projects are reliant upon Geographic Information System (GIS) data for the quick and efficient base mapping of large project areas and to provide effective and aesthetically-pleasing charts, graphs, data tables, and exhibits to public agencies and (in some cases) the general public. GIS data also provides an invaluable tool for public agencies to catalogue and manage existing infrastructure on a large scale, in addition to maintenance programs and capital improvement projects. JBA operates a dedicated GIS Department to provide these tools to our clients in the public as well as private sectors.

Our GIS Department has added tremendous value to a wide variety of Planning and Feasibility projects successfully completed by JBA, including the preparation of a Hydrologic Geodatabase/Network for Arbor Ridge Master Plan Community Preliminary Hydrology and Hydraulics Study and Water Quality Management Master Plan (WQMMP) near the City of Beaumont, preparation of a Hydrologic Geodatabase/Network for the Victor Valley Developers Associations (VVDA) Drainage Master Plan in the City of Victorville, and preparation of the base GIS for a Draft Special Event Operations Plan for a multi-day festival originally proposed for Glen Helen Regional Park in the County of San Bernardino. Recently, JBA has completed a Hydrologic Geodatabase/Network to serve as the basis for a large alternative energy project in Southern California. On a day-to-day basis, our GIS technicians act in a supporting role to the entire JBA staff.



JBA has also assisted various municipalities, including the Lake Arrowhead Community Services District (LACSD) and the San Bernardino Valley Water Conservation District (SBVWCD) in the conversion of in-ground assets to GIS Geodatabases and utility networks to aid in asset management, maintenance activities, and capital improvement and strategic planning programs. This data has also allowed these agencies to produce numerous exhibits for Board of Director meetings and public hearings.

The graphic design capabilities of our GIS Department allow JBA to produce visually striking exhibits, charts, tables, and presentation materials for both our in-house reports and design documents as well as documents prepared by other firms. JBA frequently prepares large-format, presentation-quality exhibits for our clients to be used in meetings with municipalities, potential investors, and the general public. Recently, JBA has also prepared highly detailed conceptual three-dimensional models for proposed industrial/commercial projects in the City of San Bernardino and the Community of Rubidoux in Riverside County.



In addition to its GIS capabilities, JBA has been for decades heavily involved in a multitude of Large-Scale Planning and Feasibility projects in Southern California, including the Hunter's Ridge Master Plan and Environmental Assessment in the City of Fontana, the Glen Helen Regional Park Master Plan and Environmental Assessment in the County of San Bernardino, the State College Industrial Park Master Plan and Environmental Assessment, the Guasti Regional Park Master Plan and Environmental Assessment, and civil engineering design and planning services for the original 1982, and 1983, US Festivals at Glen Helen Regional Park in the County of San Bernardino.

The following sections identify the primary Planning, Feasibility, and GIS services offered by JBA and provide a select list of client references and examples of our Planning, Feasibility, and GIS project experience.

Primary Services

On-Call Geographic Information System (GIS) Services

JBA offers on-call GIS data research and mapping services to our clients on an as needed basis, such as property verification, topographic/base mapping, and aerial orthophoto acquisition. These on-call services add value to our client's projects by providing them with "on-the-fly" data and exhibits that can be used for project meetings and presentations.

Utilities Geodatabase Assembly & Management

JBA provides Utility Geodatabase assembly and management services to Public Agencies who wish to convert their existing "as-built" in-ground utilities and assets to GIS data. This typically applies to water and wastewater systems, but can also be applied to flood control networks, natural gas utilities, and "dry" utilities such as electricity. JBA also provides training services for Public Works managers, supervisors, and technical staff in how to most effectively utilize GIS data in decision making, planning, and presentation to governing boards and the general public.

Conceptual & 3D-Model Exhibit Preparation

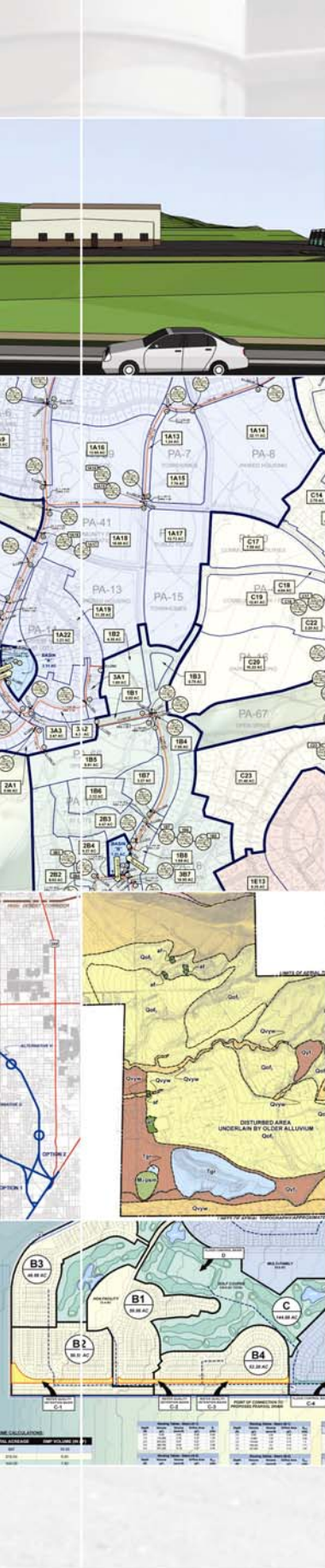
JBA often prepares GIS-based project exhibits for the purpose of demonstrating the overall concept of a proposed development to our clients, their investors, public agencies, and/or the general public. Increasingly, these exhibits incorporate detailed 3D site models generated to provide conceptual views of the project from various angles and vantage points, which proves extremely effective in helping audiences visualize the project.

Drainage Master Plan Preparation

Large-scale developments may require the preparation of a comprehensive Drainage Master Plan (examples include Master Planned Communities, Specific Plan Areas, and cities requiring a new or revised Hydrology Study for all or a significant portion of the city itself). These Master Plans generally do not include the level of detail characteristic of a singular development, but rather provide the general calculations necessary to locate and design large-capacity channels, flood control basins, and other regional drainage facilities.

Water Quality Management Master Plan (WQMMP) Preparation

Large-scale developments may also require the preparation of a comprehensive Water Quality Management Master Plan (WQMMP) to compliment the Drainage Master Plan prepared for the development. These WQMMPs generally do not include the



level of detail characteristic of a singular development, but rather provide the general calculations and specifications necessary to identify and size the requisite Treatment Control Best Management Practices (BMPs) necessary to mitigate any adverse impact the proposed development may have on the clarity of downstream conveyances.

▪ Feasibility Study Preparation

Feasibility Studies and Feasibility Analyses are prepared to determine the overall viability of a proposed development or project. These studies include examinations of various existing and potential factors affecting the project, including (but not limited to): Environmental issues (including potential hazards) and biological factors, transportation and site access, hydrology, drainage, and flooding potential, availability of utilities, applicable land use/planning requirements and/or restrictions, and preliminary development cost estimates.

Client References (Partial List)

We invite you to contact the following clients, or others referenced in our project abstracts, regarding JBA's capabilities and technical expertise in Planning, Feasibility, and GIS:

Client/Address	Contact
Stantec 3105 East Guasti Road, Suite 100 Ontario, CA 91761	Ned A. Araujo, P.E. Project Manager 909 / 390-8880
A.W. Properties West, LLC 16236 San Dieguito Road, Suite 3-10 Rancho Santa Fe, CA 92067	Earl Sterrett President 858 / 756-7584
Proactive Engineering Consultants 1875 California Avenue Corona, CA 92881	Robert Brown, P.E. President 951 / 280-3303
Moser Ventures, Inc. 1012 2nd Street, Suite 100 Encinitas, CA 92024	Dennis Moser President 760 / 479-1820
Lilburn Corporation 1905 Business Center Drive San Bernardino, CA 92408	Cheryl A. Tubbs Vice President of Operations 909 / 890-1818
Lake Arrowhead Community Services District 28200 State Highway 189, Bldg. 3, Ste. 150 Lake Arrowhead, CA 92352	Ryan Gross, P.E. District Engineer 909 / 336-7137
San Bernardino Valley Water Conservation District 1630 West Redlands Boulevard, Suite "A" Redlands, CA 92373	Robert Neufeld District Manager 909 / 793-2503
Deployed Resources, LLC P.O. Box 669 Scotch Plains, NJ 07076	Michael Frisch Owner & President 908 / 889 - 6226
I.M. James Enterprises, LLC 14240 Pointe Reyes Fontana, CA 92326	Irene James President 909 / 702-0673



Project Experience (Partial List)

The select projects listed below are indicative of JBA's experience in **Planning, Feasibility, and GIS**. Select example projects are also discussed in greater detail in the abstracts following this section.

Project Description*	Services	Project Location
Sunrise Ranch	Environmental Impact Report (EIR)	San Bernardino County, CA
Riverside International Motorplex	Draft EIR - Civil Engineering Consulting	Moreno Valley, CA
Hunter's Ridge	Master Plan & Environmental Assessment	Fontana, CA
Arbor Ridge	Master Plan Hydrology Study & Drainage Analysis	Beaumont, CA
Arbor Ridge	Water Quality Management Master Plan	Beaumont, CA
Rancho Los Lagos	Water Quality Management Master Plan	Imperial County, CA
Victor Valley Developers Association (VVDA)	Drainage Master Plan	Victorville, CA
Victorville Annexation Area	Preliminary Hydrology Study	Victorville, CA
Victor Valley Developers Association (VVDA)	Master Coordination GIS	Victorville, CA
Lake Arrowhead Community Services District (LACSD)	Master District GIS	Lake Arrowhead, CA
Glen Helen Regional Park	Conceptual Special Event GIS & Draft Operations Plan	San Bernardino County, CA
Greenspot Feasibility Analysis	Geotechnical GIS	San Bernardino County, CA
Glen Helen Regional Park	Master Plan & Environmental Assessment	San Bernardino County, CA
Loma Linda Hills	Specific Plan & Environmental Assessment	Loma Linda, CA
Guasti Regional Park	Master Plan & Environmental Statement	Ontario, CA
State College Industrial Park	Master Plan & Environmental Assessment	San Bernardino, CA
Lemonwood	Master Plan	Ventura, CA
Bel Air Estates	Master Plan	Bel Air, CA
Village Lake	Planned Unit Development (PUD)	Highland, CA
Shandin Hills	Master Plan	San Bernardino, CA

*Note: Project Descriptions are summaries only and do not necessarily list all services provided.

