

Pump Station PS&E & Bid Package Preparation

Cottage Grove Pump Station, Lake Arrowhead, CA

Client

Lake Arrowhead
Community Services
District (LACSD)
P.O. Box 700
Lake Arrowhead, CA
92352

Project Location

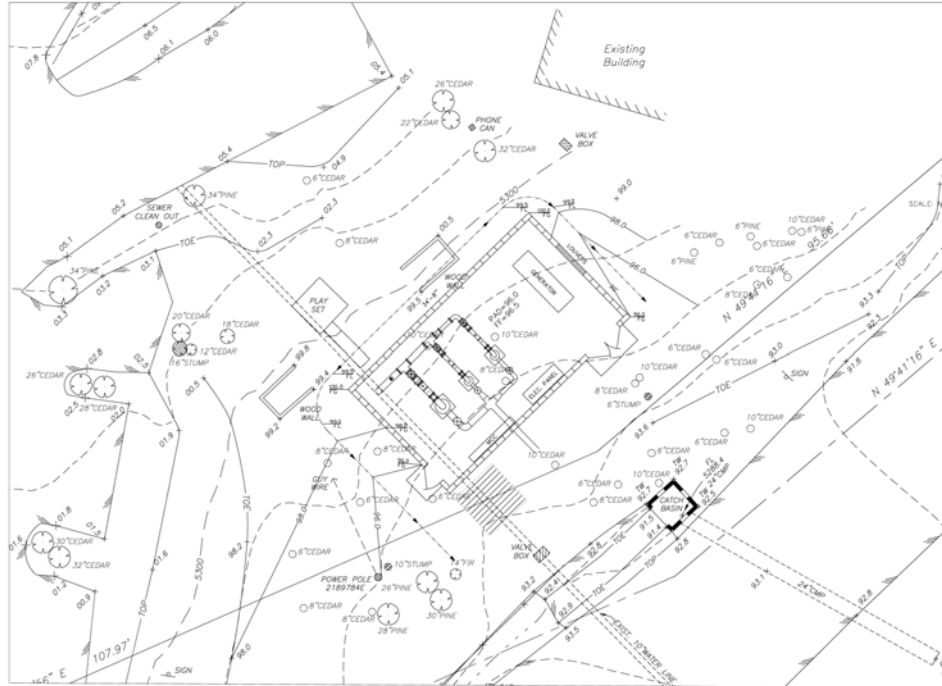
Lake Arrowhead, CA

Contact

Ryan Gross, P.E.
District Engineer
909 / 336-7137

Project Date

2008



JBA prepared the Plans, Specifications, and Estimates (PS&E) and bid packages for the construction of the new Cottage Grove pump station for the Lake Arrowhead Community Services District (LACSD) in Lake Arrowhead, CA.

In addition, JBA will also provide project oversight and management on an “as-needed” basis during the bidding phase of the project.

Key Project Staff

Jay Gunther, P.E. – *Project Manager*

Joseph S.C. Bonadiman, P.E. – *Quality Control/Project Oversight*

